

X2 Passive Doubler 20-40GHz, 2.92mm Male

2022-3-21



Description:

AT-PM2-2040T is a passive broadband MMIC based doubler. It features excellent conversion loss, superior isolations and harmonics suppression across a broad bandwidth.

This double offers extremely high suppression, small size, repeatability, scalable cost for high volume applications.

More information, please visit www.atmicrowave.com

Feature

- ✓ Wideband coverage
- ✓ High Suppression
- ✓ High 1st /3rd Isolation
- ✓ Small Size
- ✓ Low Cost

Application

- ✓ 5G Systems
- ✓ Raday System
- ✓ Test Equipment
- ✓ ROF (RF Over Fiber)
- ✓ Communication System

Electronical Specifications:

Parameter	Min	Typical	Max
Input Frequency		10-20GHz	
Input Power	+14dBm	+15dBm	+17dBm
Output Frequency		20-40GHz	
Conversion Loss		-13dB	-15
Pout (Pin=+15dBm)		+2dBm	
X1/x3 Suppression vs X2 Pout		-20dBc	
Spec Temp		25C	



Mechanical Information

Item	Description
Input Port	SMA Female
Output Port	2.92mm Male
Case Material	Copper
Finish	Gold Plated
Weight	16g
Size:	See outline

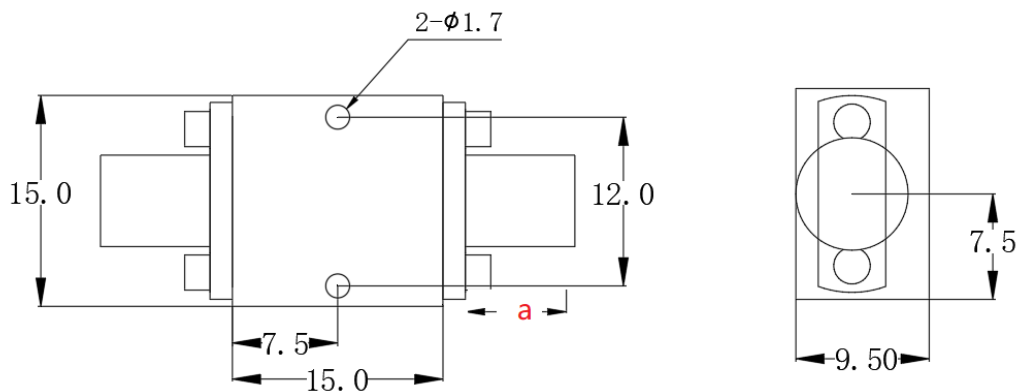
Absolute Maximum Ratings Table

Parameter	Value
RF Power Handling	+20dBm
Operating Temperature	-40 to +85C
Storage Temperature	-65 to +150C

NOTE: AT Microwave reserves the right to change the specification without notice.

Contact with us for the latest datasheet and information.

Dimension: (mm)



	<26.5GHz	<40GHz	<50GHz	<67GHz
Connector	SMA	2.92mm	2.4mm	1.85mm
Length of a	9.4mm	9.5mm	10.8mm	11.3mm

Note: Female Default. Contact with us for other types.

